

# Fibre Optic Connector Cleaning Guide



## Fibre optic connectors must be cleaned as detailed below during initial installation

The RF Transmitter modules contain laser diode sources operating at 850→1610nm. These devices are rated under EN60825-1:2001 "Safety Of Laser Products", as CLASS 1 radiation emitting devices.

When operating the equipment note the following:



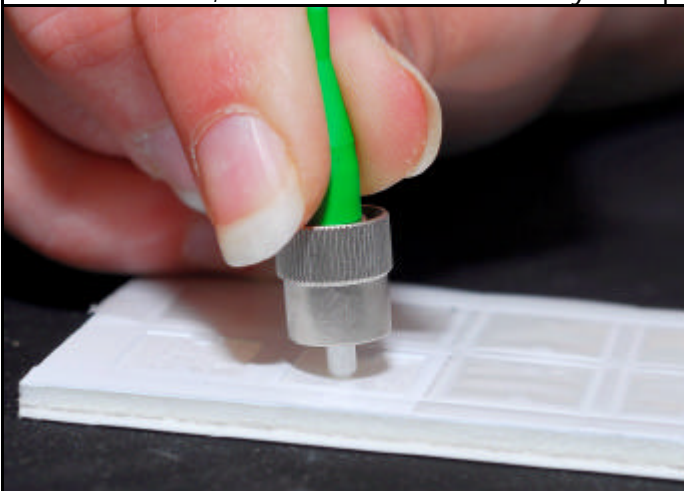
- Never look into the end of an optical fibre directly or by reflection either with the naked eye or through an optical instrument.
- Never leave equipment with radiating bare fibres accessible – always cap the connectors.
- Do not remove equipment covers when operating.
- Details of optical connections to the units, compatible fibre types and care instructions can be found in the system handbook. Please read this section before using the link.

**Adjustment, maintenance and repair of the equipment should only be carried out by suitably qualified personnel.**

Fibre optic connectors are more sensitive to damage and contamination than electrical connectors. In order to maintain full performance from your fibre optic link system, it is necessary to take care to protect the connectors from damage and to keep them clean.

The cable connectors should always be cleaned before they are used, even if they have been protected by dust caps.

When the fibre optic cables are not connected, it is essential that the cable and module connectors are protected by the dust caps provided with the system. Failure to do so may result in damage to the fibre ends, which are critical to the system performance.



### Step 1

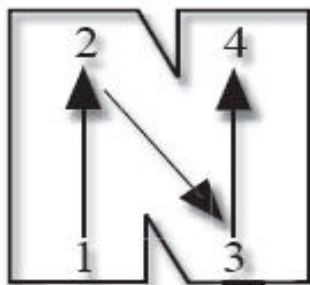
#### Cleaning items required

- Quickswipe2 cleaning card PPM PART No 54034
1. Peel the plastic cover from an unused "N".
  2. Hold the connector between your thumb and forefinger

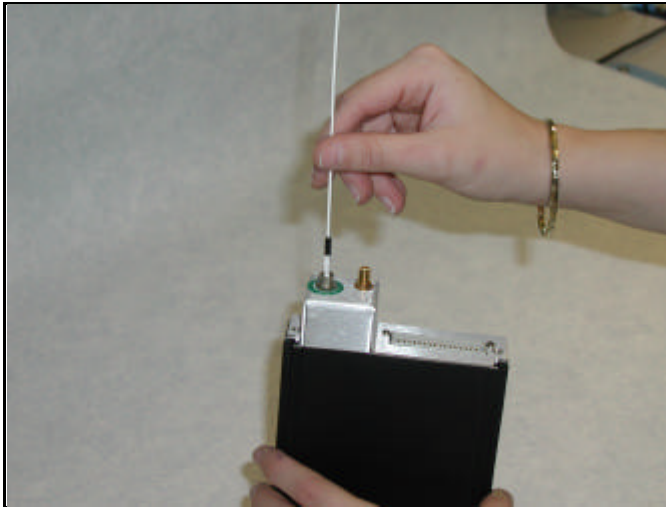
### Step 2

1. Clean the connector using firm pressure by swiping in a pendulum motion through each segment of the "N" shape, following the diagram

**Do not swipe over the same space twice.**



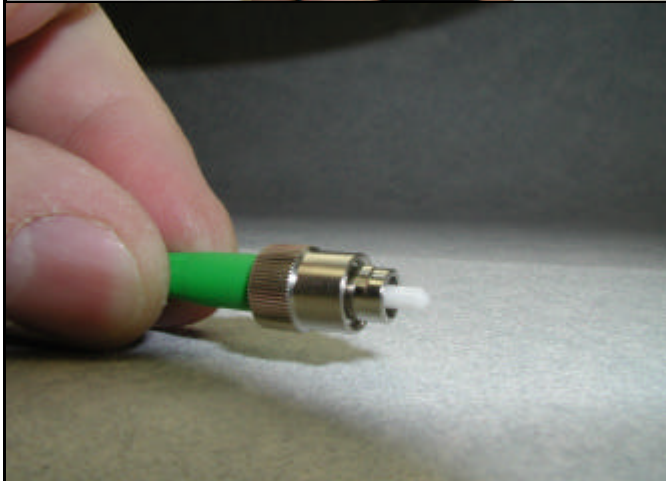
# Fibre Optic Connector Cleaning Guide



## Step 3

### Module Female Receptacle Cleaning (only recommended if problems are being experienced)

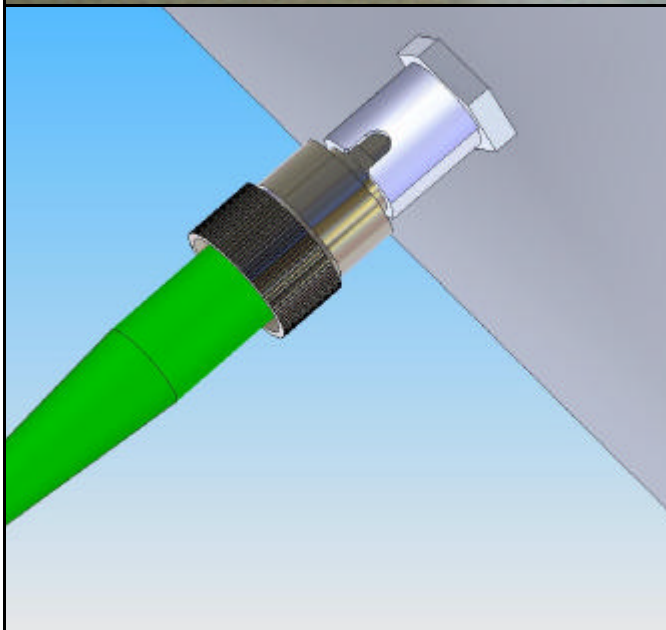
1. Using a cleaning stick PPM Part 54032. Gently push the probe into the receptacle and twist around several times to dislodge any dirt.
2. Discard cleaning stick after use



## Step 4

### Connector Keyway location

1. Locate connector keyway.
2. Hold connector with keyway at the upper most.



## Step 5

1. Insert Connector ferrule into connector feed through.
2. Ensure keyway locates into cutout of connector feed through.
3. Screw, finger tight, the connector barrel.